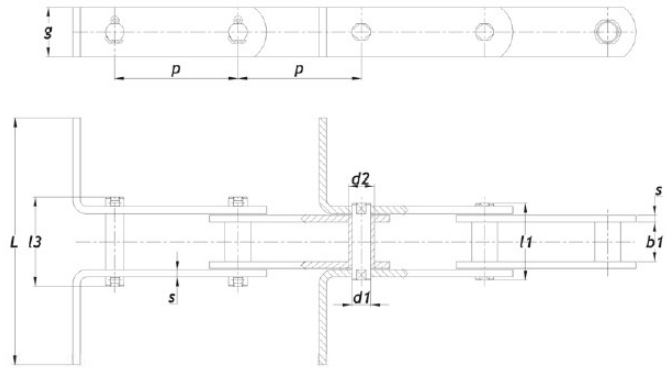
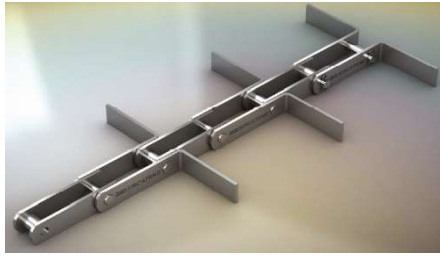




Cadena de palas según DIN 8165



DIN NR	P mm	b1 mm min	d1 mm	d2 mm	g mm	s mm	l1 mm max	l3 mm max	Fb N
FV 63	63	22	12	18	30	4	46	55	63000A 126000B
	80								
	100								
	125								
	150								
	160								
FV 90	80	25	14	20	35	5	53	62	90000A 180000B
	100								
	125								
	150								
	160								
FV 112	100	30	16	22	40	6	63	72	112000A 224000B
	125								
	150								
	160								
	175								
FV 140	100	35	18	26	45	6	68	80	140000A 280000B
	125								
	150								
	160								
	175								
FV 180	100	45	20	30	50	8	86	100	180000A 360000B
	125								
	150								
	160								
	175								
FV 250	125	55	26	36	60	8	98	114	250000A 500000B
	150								
	160								
	175								
	200								
FV 315	150	65	30	42	70	10	117	133	315000A 630000B
	160								
	175								
	200								
	250								